

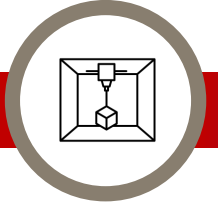
Year 10

Literacy
CAD/CAM
Tolerance
Ideation
Research
Development
Iteration
Evaluation



Product Design

Introduction to the course and exploration of component 1 and 2



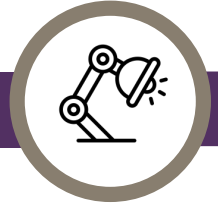
CAD/CAM

Developing skills in use of CAD/CAM software to produce 3D printed models



Bird Box

Modelling skills and practical workshop skills developed



Anglepoise Lamp

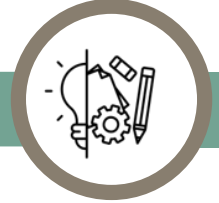
Practise NEA project – exploring knowledge needed for the NEA



NEA – Section A & B

Year 11

Careers
Carpenter or Joiner
Product Design Assistant
CAD Technician
Engineer
Set or Prop Maker



Section C

Generating and developing design ideas



Section B

Developing a design brief and specification



Section A

Identifying and investigating design possibilities



Section D

Manufacturing a prototype



Section E

Analysing and evaluating design decisions and prototypes



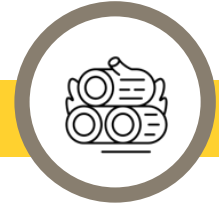
Exam Preparation

Revisiting key areas of the exam specification



Core Knowledge & Understanding

- Design & technology and our world
- Smart materials
- Electronic systems & programmable components
- Mechanical components & devices
- Materials



In-depth Knowledge & Understanding

Natural & manufactured timber



Final Written Exam

